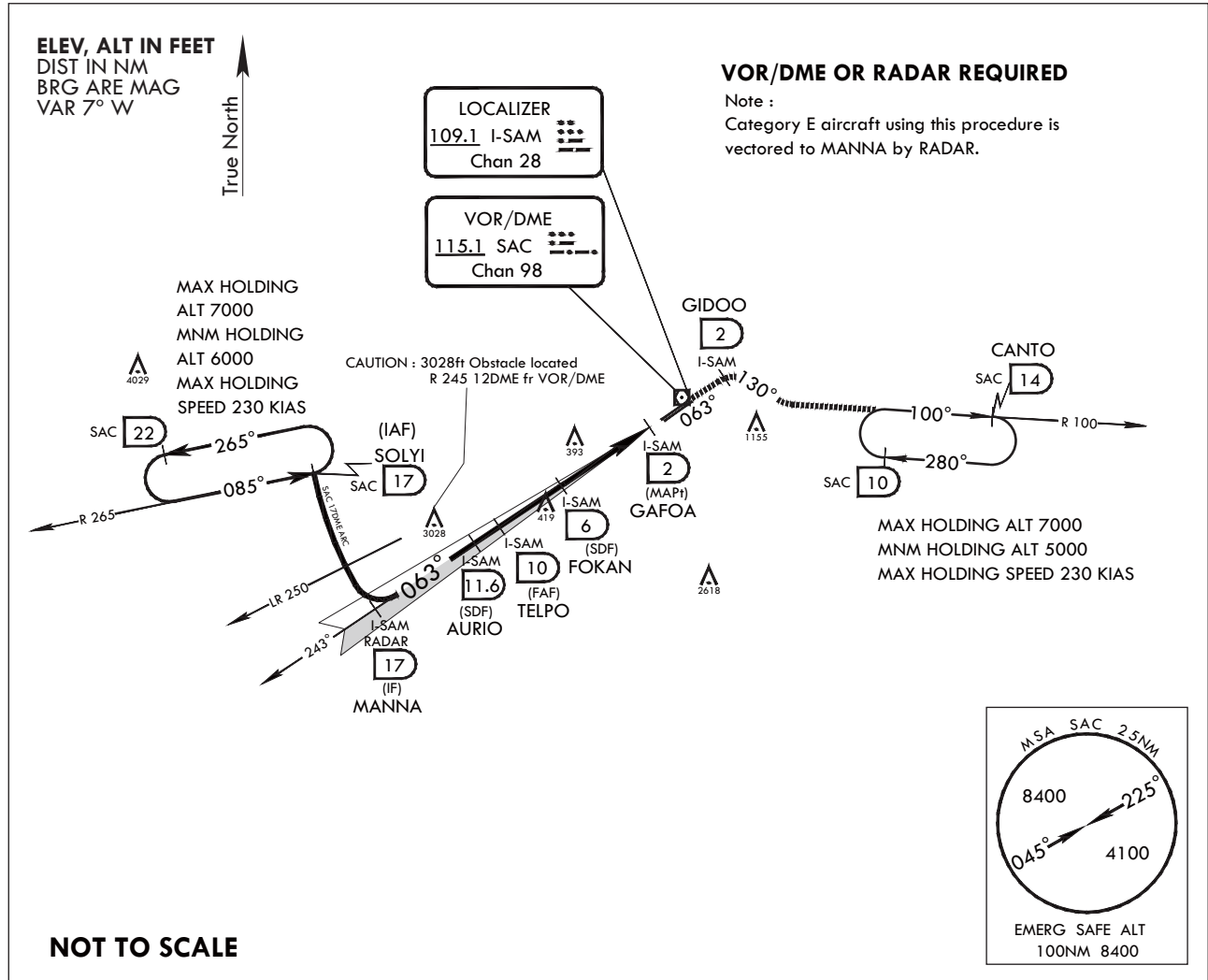


INSTRUMENT APPROACH CHART

AERODROME ELEV 25 FT
HEIGHTS RELATED TO HIGHEST ELEV TDZ 17 FT

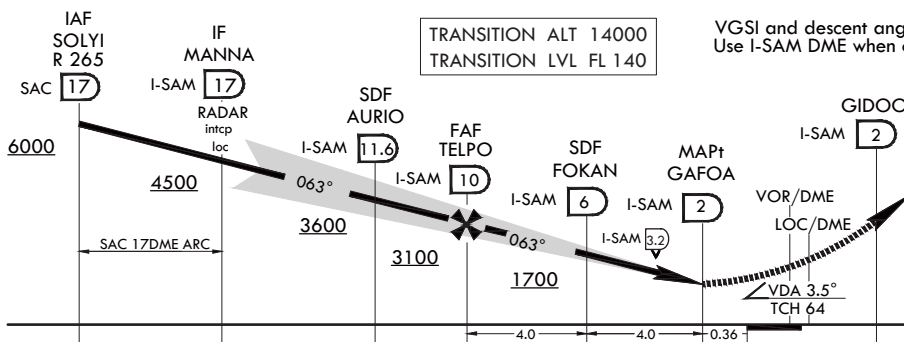
SACHEON APP 135.4 344.7
SACHEON TWR 126.2 236.6
305.4

SACHEON/Sacheon (RKPS)
LOC/DME
RWY 06L



NOT TO SCALE

MISSED APPROACH: Climb to 5 000 via heading 063° to GIDOO, then right turn heading 130° to intercept R 100 SAC and track on R 100 SAC to CANTO and hold, continue climb-in-hold to 5 000, or as directed by ATC.



VGSI and descent angles not coincident (VGSI 3.7° TCH 60). Use I-SAM DME when on the localizer course.

CATEGORY	A	B	C	D	E
S-LOC 6L *	700/40	683(700-¾)	700-1½	683(700-1½)	
CIRCLING **	800-1 775(800-1)	900-1¼ 875(900-1¼)	1000-3	975(1000-3)	1120-3 1095(1100-3)

* When ALS inop, increase CAT AB RVR to 55 and vis to 1 mile, CAT CDE vis to 2 miles.
** Circling is not authorized SE of RWY 6-24.

Change: New chart.

INTENTIONALLY

LEFT

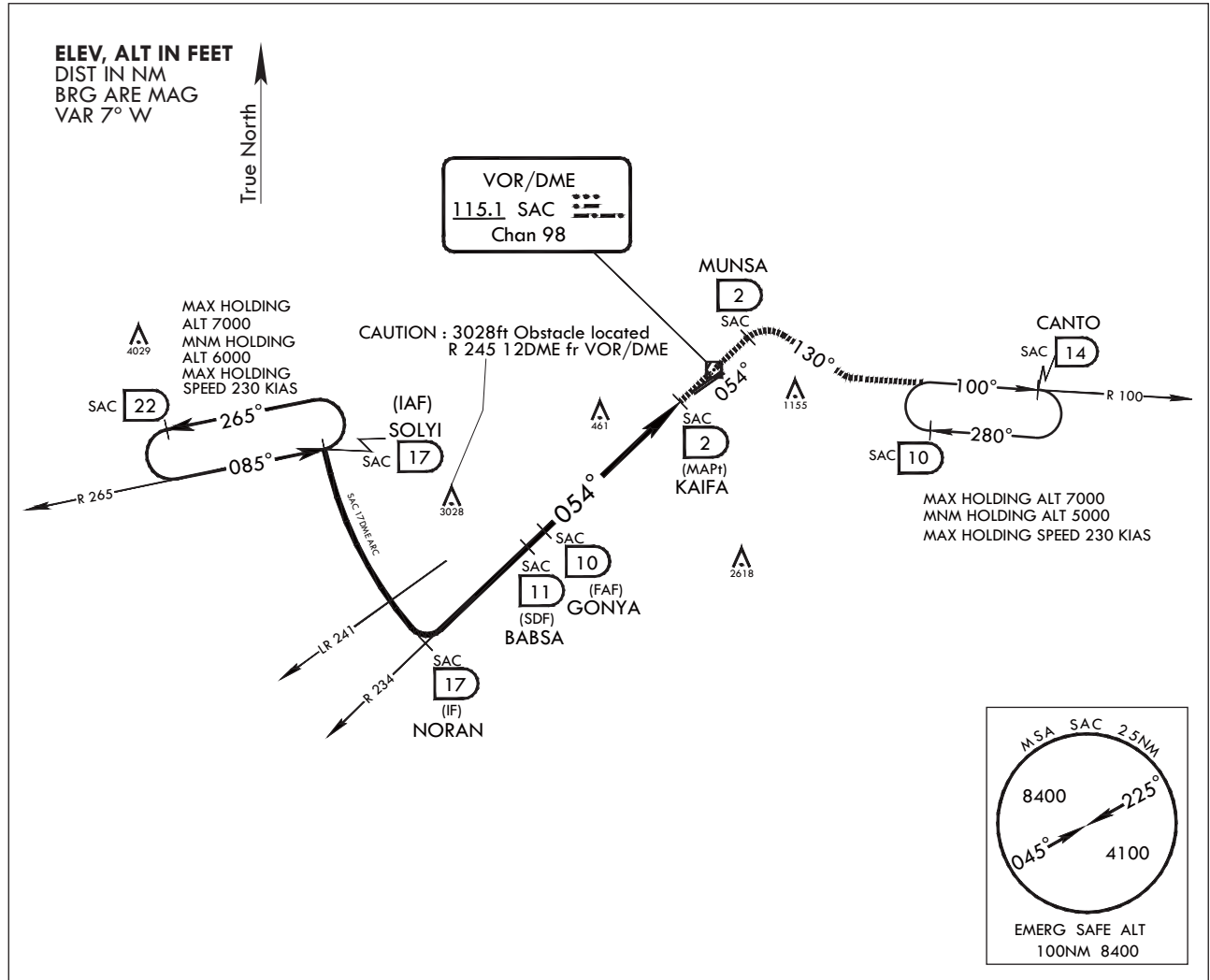
BLANK

**INSTRUMENT
APPROACH
CHART**

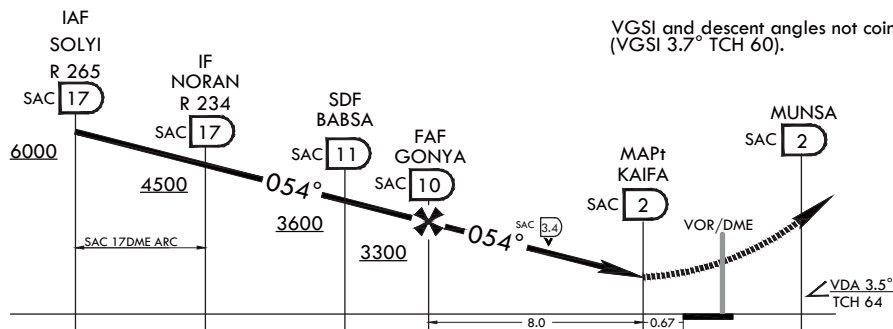
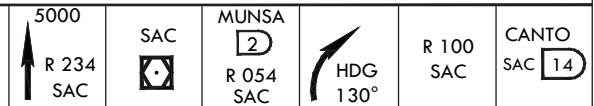
AERODROME ELEV 25 FT
HEIGHTS RELATED TO
HIGHEST ELEV TDZ 17 FT

SACHEON APP 135.4 344.7
SACHEON TWR 126.2 236.6
305.4

**SACHEON/Sacheon (RKPS)
VOR/DME
RWY 06L**



MISSED APPROACH : Climb to 5000 via track on R 234 SAC to SAC over and track on R 054 SAC to MUNSA, heading 130° to intercept R 100 SAC and track on R 100 SAC to CANTO and hold, continue climb-in-hold to 5 000.



CATEGORY	A	B	C	D
S-VOR 6L *	880/45	863(900-7/8)	880-2	863(900-2)
CIRCLING **	880-1¼ 855(900-1¼)	900-1¼ 875(900-1¼)	1000-3	975(1000-3)

* When ALS inop, increase CAT A RVR to 55 and vis to 1 mile, CAT B RVR to 60 and vis to 1¼miles, CAT CD vis to 2½miles.
** Circling is not authorized SE of RWY 6-24.

Change: New chart.

INTENTIONALLY

LEFT

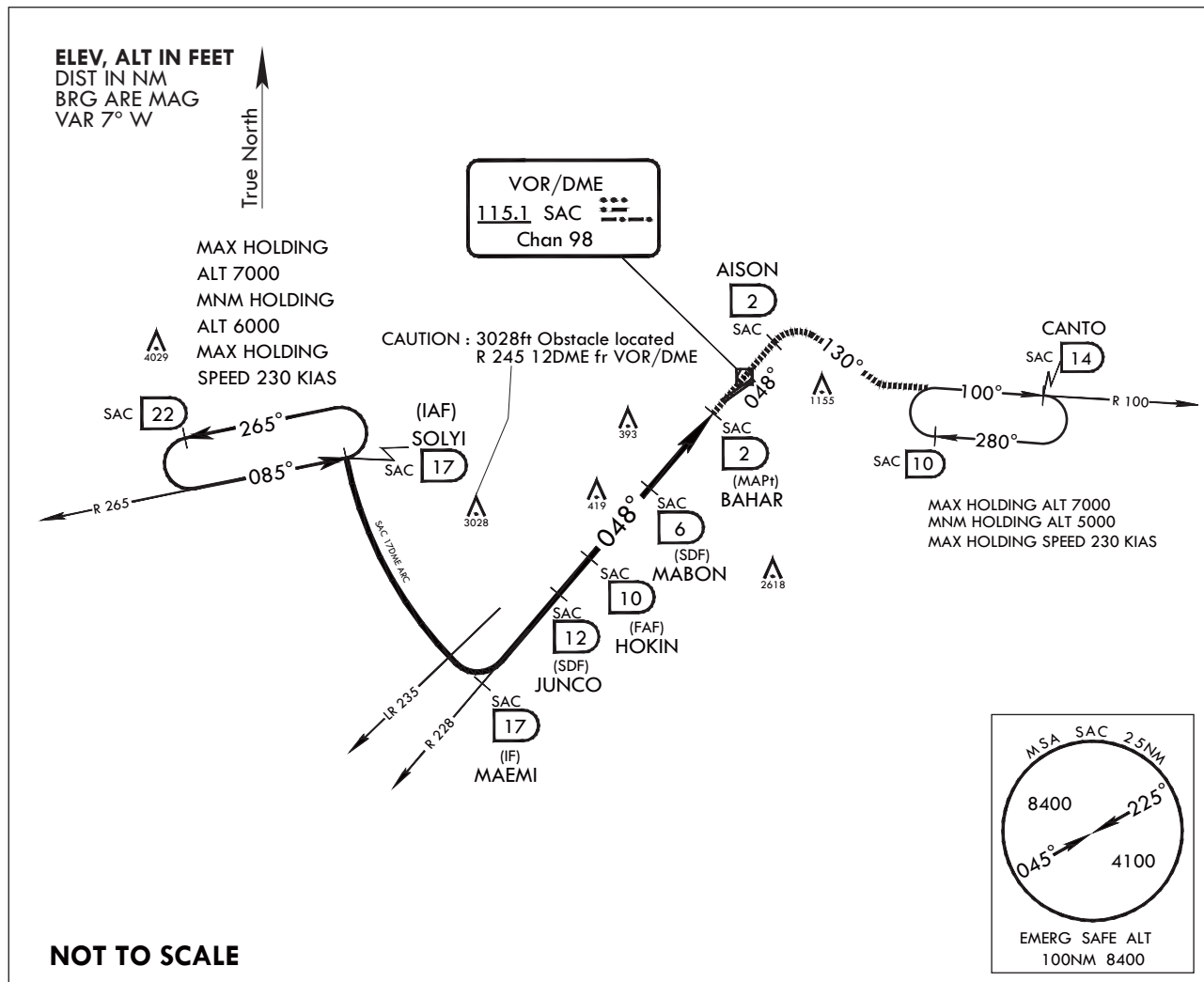
BLANK

**INSTRUMENT
APPROACH
CHART**

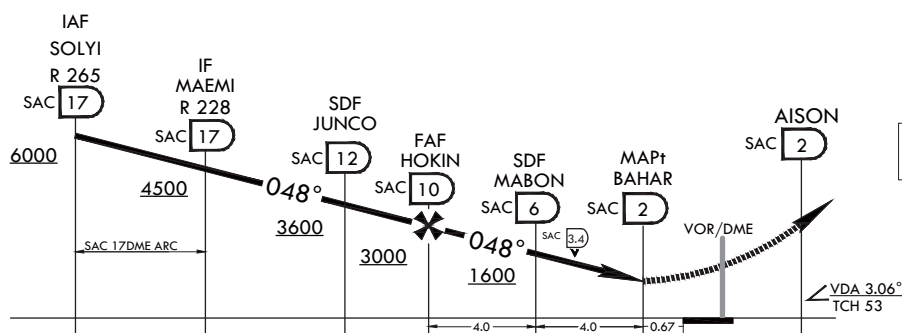
AERODROME ELEV 25 FT
HEIGHTS RELATED TO
HIGHEST ELEV TDZ 19 FT

SACHEON APP 135.4 344.7
SACHEON TWR 126.2 236.6
305.4

**SACHEON/Sacheon (RKPS)
VOR/DME
RWY 06R**



MISSED APPROACH : Climb to 5000 via track on R 228 SAC to SAC over and track on R 048 SAC to AISON, then right turn heading 130° to intercept R 100 SAC and track on R 100 SAC to CANTO and hold, continue climb-in-hold to 5 000.



TRANSITION ALT 14000
TRANSITION LVL FL 140

CATEGORY	A	B	C	D
S-VOR 6R *	700/45	681(700-7/8)	700-1½	681(700-1½)
CIRCLING **	800-1 755(800-1)	900-1¼ 875(900-1¼)	1000-3	975(1000-3)

* When ALS inop, increase CAT AB RVR to 55 and vis to 1 mile, CAT CD vis to 2 miles.
** Circling is not authorized SE of RWY 6-24.

INTENTIONALLY

LEFT

BLANK

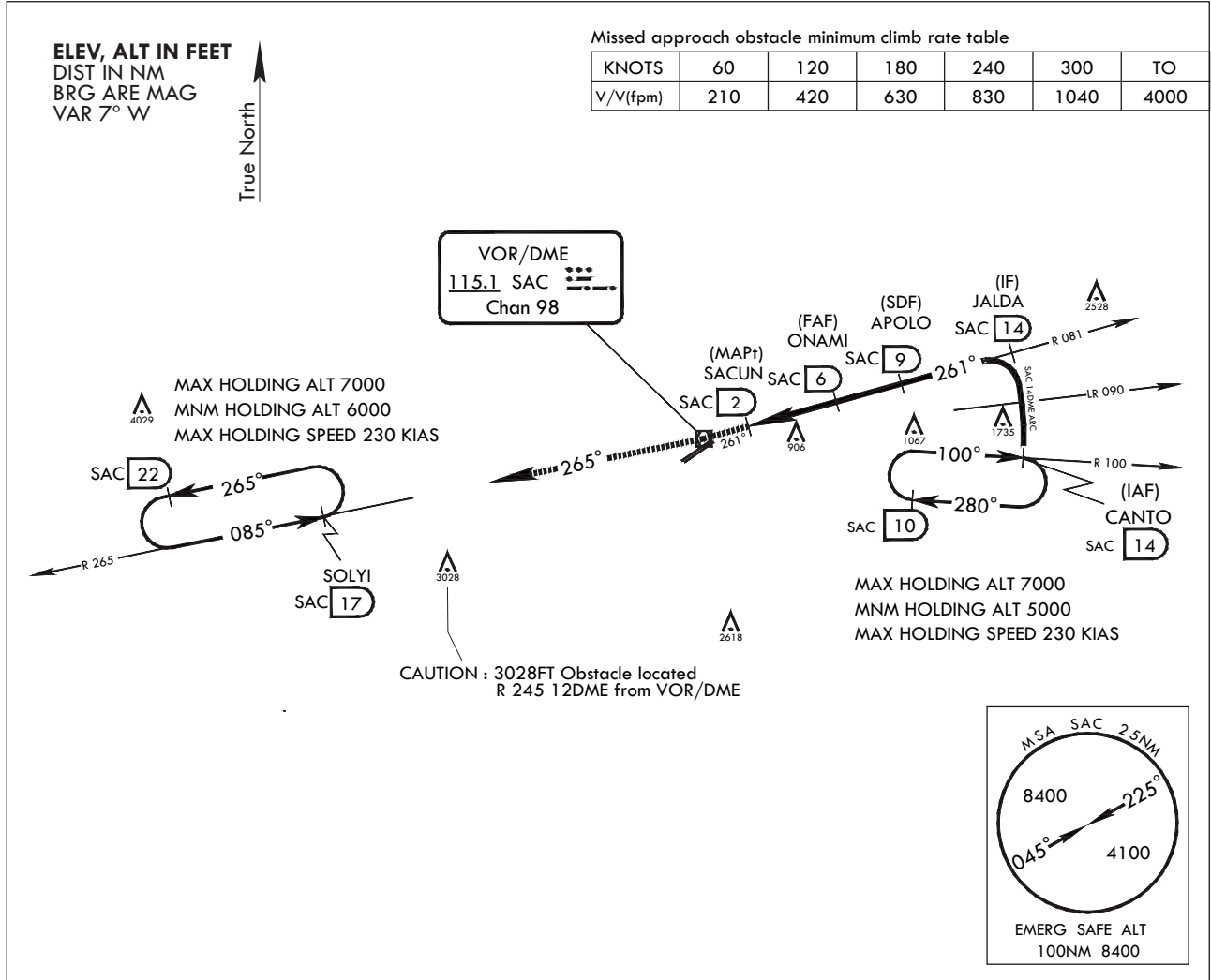
**INSTRUMENT
APPROACH
CHART**

AERODROME ELEV 25 FT
HEIGHTS RELATED TO
HIGHEST ELEV TDZ 24 FT

SACHEON APP 135.4 344.7
SACHEON TWR 126.2 236.6
305.4

**SACHEON/Sacheon (RKPS)
VOR/DME
RWY 24L**

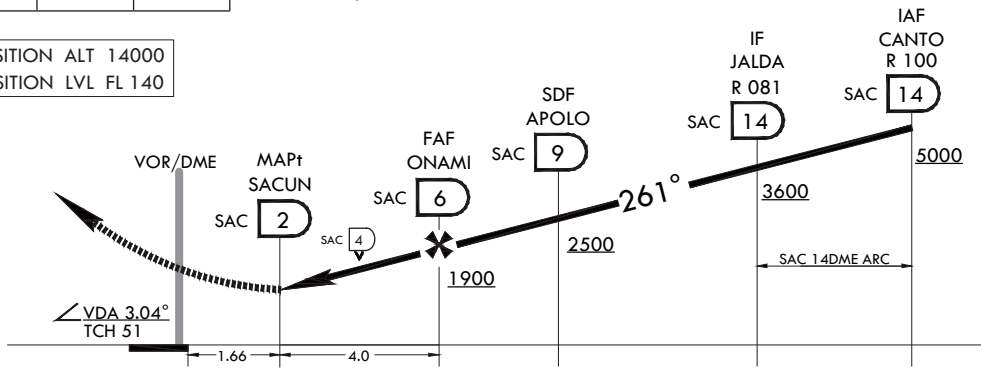
Note : Approach and circling-to-land under U.S.TERPS



6000	SAC	R 265	SOLYI
HGD 261°		SAC	SAC 17

MISSED APPROACH : Climb to 6000 via heading 261° to SAC then track outbound R 265 SAC to SOLYI(R 265 SAC/17DME) and hold, continue climb-in-hold to 6000.

TRANSITION ALT 14000
TRANSITION LVL FL 140



CATEGORY	A	B	C	D
S-VOR 24L	1220-2	1196(1200-2)	1220-3	1196(1200-3)
CIRCLING *	1220-2	1195(1200-2)	1220-3	1195(1200-3)

* Circling is not authorized SE of RWY 24-6.

INTENTIONALLY

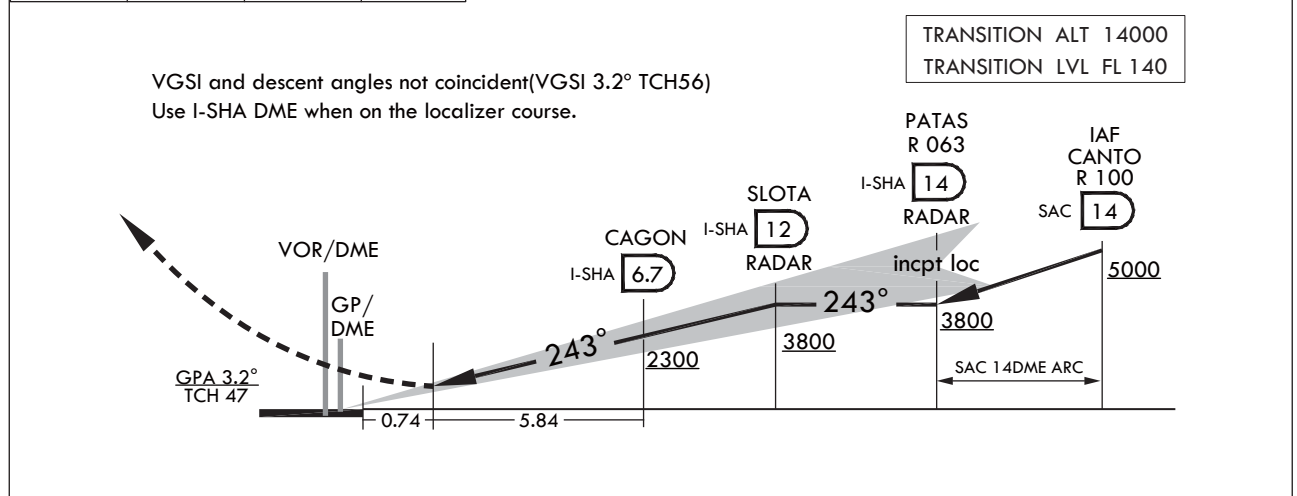
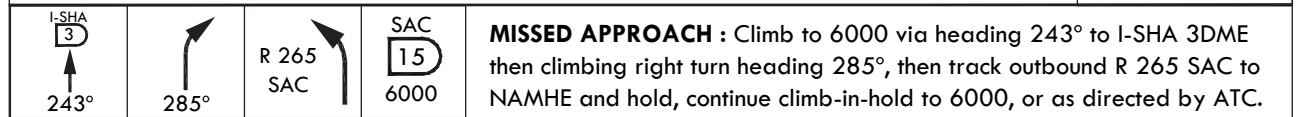
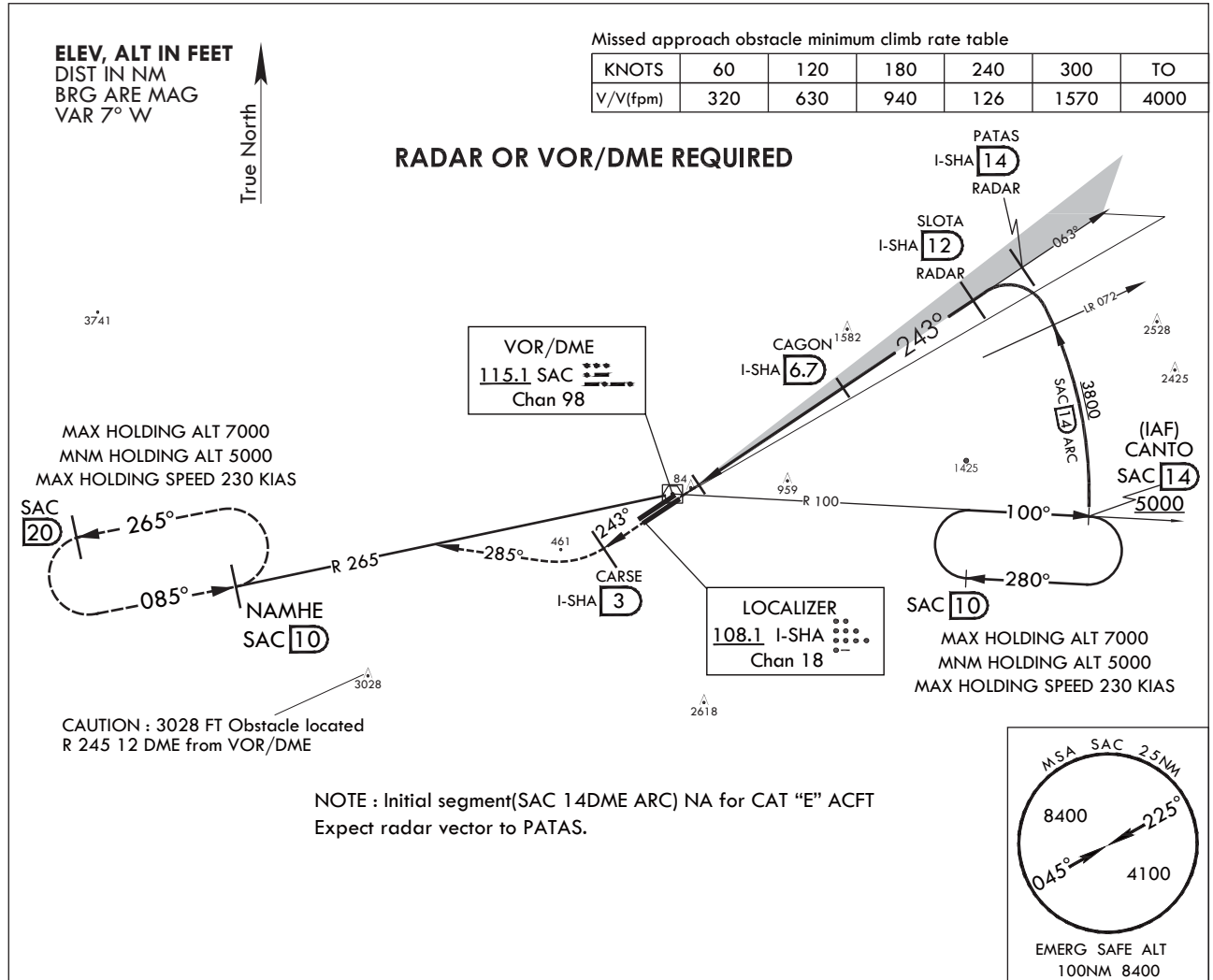
LEFT

BLANK

INSTRUMENT APPROACH CHART
AERODROME ELEV 25 FT
HEIGHTS RELATED TO HIGHEST ELEV TDZ 19 FT

SACHEON APP 135.4 344.7
SACHEON TWR 126.2 236.6
305.4

SACHEON/Sacheon (RKPS) ILS RWY 24R



CATEGORY	A	B	C	D	E
S-ILS 24R		317/45	298(300-7/8)		

Change: New chart.

INTENTIONALLY

LEFT

BLANK

INTENTIONALLY

LEFT

BLANK

**INSTRUMENT
APPROACH
CHART**

AERODROME ELEV 25 FT
HEIGHTS RELATED TO
HIGHEST ELEV TDZ 19 FT

SACHEON APP 135.4 344.7
SACHEON TWR 126.2 236.6
305.4

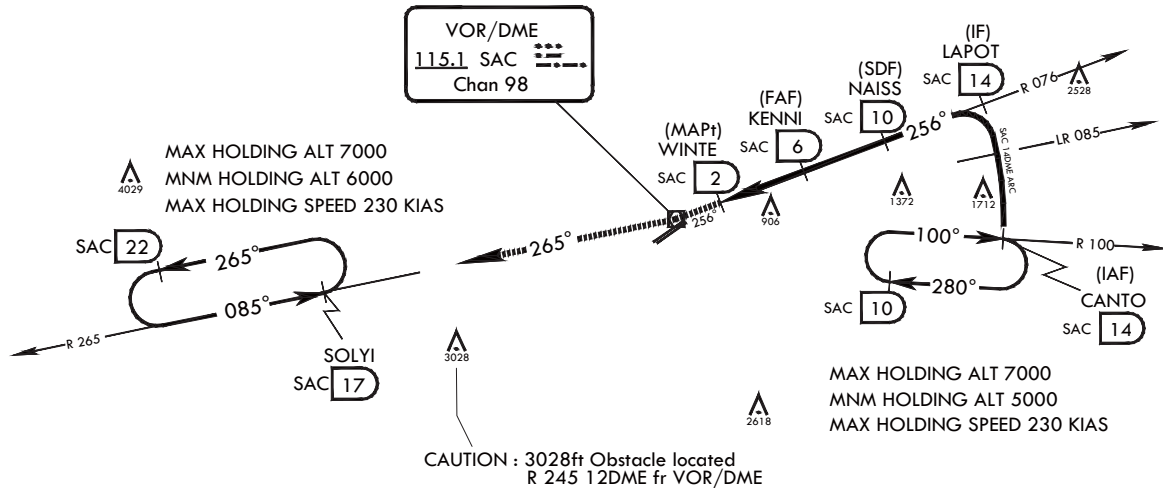
**SACHEON/Sacheon (RKPS)
VOR/DME
RWY 24R**

ELEV, ALT IN FEET
DIST IN NM
BRG ARE MAG
VAR 7° W

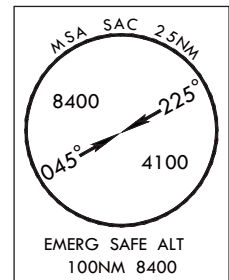


Missed approach obstacle minimum climb rate table

KNOTS	60	120	180	240	300	TO
V/V(fpm)	210	420	630	830	1040	4000



Note :
RWY 24R, ALS not install.

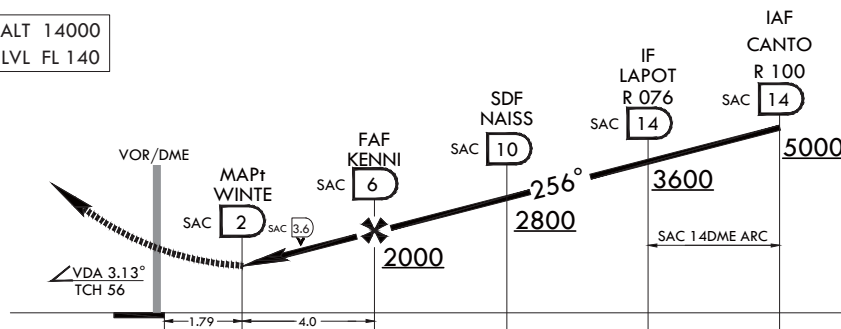


NOT TO SCALE



MISSED APPROACH : Climb to 6 000 via heading 256° to SAC then track outbound R 265 SAC to SOLYI(R 265 SAC/17DME) and hold, continue climb-in-hold to 6 000.

TRANSITION ALT 14000
TRANSITION LVL FL 140



CATEGORY	A	B	C	D
S-VOR 24R	1220-2 ¹ / ₈	1201(1200-2 ¹ / ₈)	1220-3	1201(1200-3)
CIRCLING *	1220-2 ¹ / ₈	1195(1200-2 ¹ / ₈)	1220-3	1195(1200-3)

* Circling is not authorized SE of RWY 24-6.

Change: New chart.

INTENTIONALLY

LEFT

BLANK